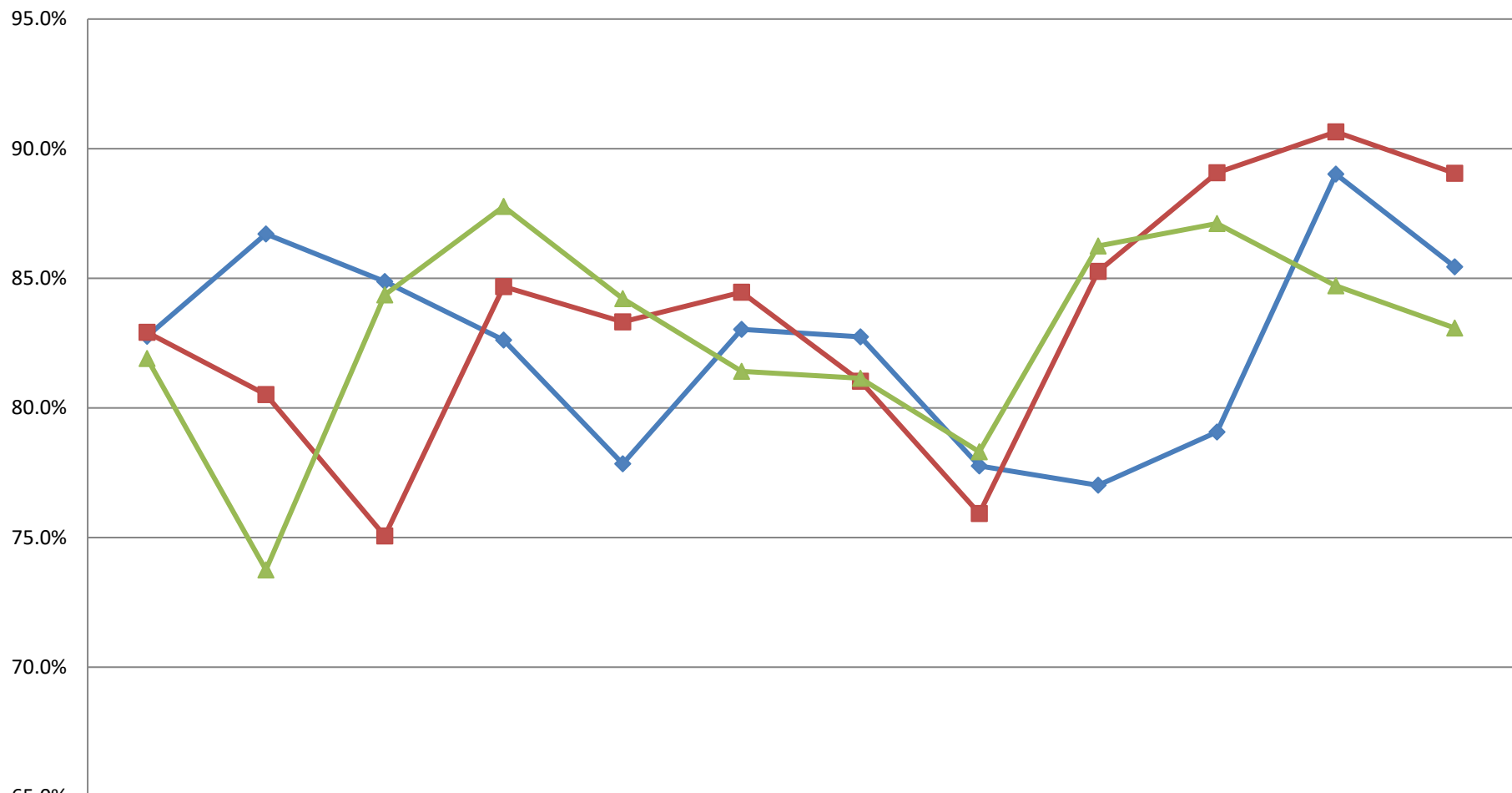


入院指標：病床稼働率＜急性期病棟＞



◆ H27年度	82.8%	86.7%	84.9%	82.6%	77.8%	83.0%	82.7%	77.8%	77.0%	79.1%	89.0%	85.4%
■ H28年度	82.9%	80.5%	75.1%	84.7%	83.3%	84.5%	81.0%	75.9%	85.3%	89.1%	90.6%	89.1%
▲ H29年度	81.9%	73.8%	84.4%	87.8%	84.2%	81.4%	81.1%	78.3%	86.3%	87.1%	84.7%	83.1%